

Thin line

PATENTED

MODULAR SYSTEMS

ELECTRIFIED
MODULAR SYSTEMS
COMPLETE WITH
INTEGRATED LIGHT



L&S Lighting
Intelligence

Thin line

PATENTED

MODULAR SYSTEMS

ELECTRIFIED
MODULAR SYSTEMS
COMPLETE WITH
INTEGRATED LIGHT

Thin Line

**PATENTED**

Modular electrified system to decorate a space. Variety of configurations with refined aesthetics. Ideal for retail and home environments.

The core of the Thin Line system is an innovative electrified concept (patented) to move and mount illuminated shelving units with ease, in a practical and safe way without visible connections or cables.

The system is very versatile and can be integrated in commercial, office and residential environments, enhancing living areas and wardrobes. The minimal space between panels produce a clean and continuous surface.

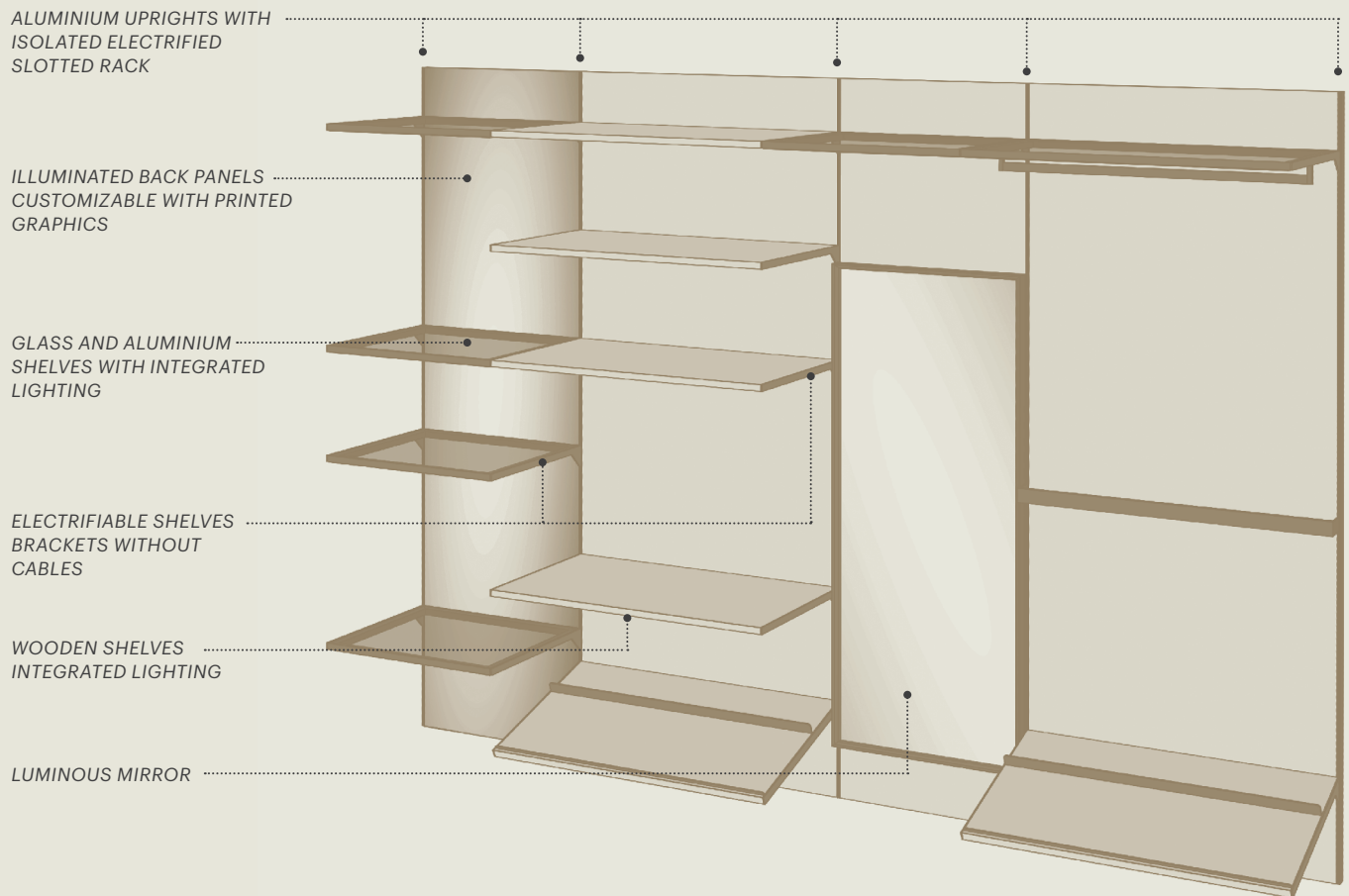
IDEAL FOR

- clothing
- eyewear
- fashion accessories
- cosmetic
- pharmacy
- luxury retail

FEATURES

- modularity
- versatility
- no need for connectors





A wide range of solutions and lighting systems to furnish wall panelling at your needs, enhancing each room with ease and without the use of cables:

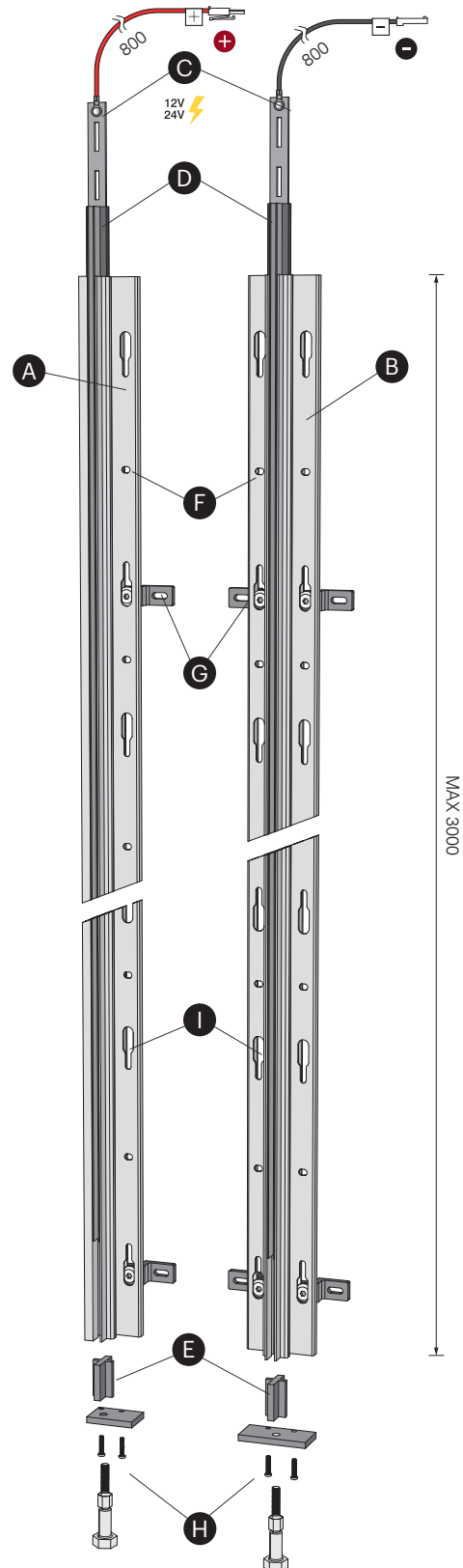
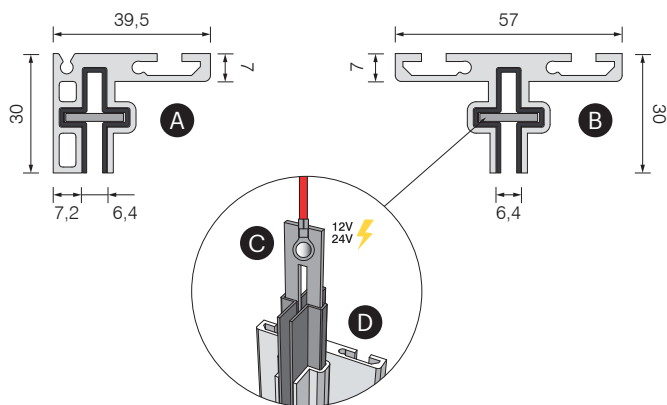
- Electrifiable shelves brackets
- Linear lamps for wooden shelves
- Glass and aluminum shelves complete with integrated lighting
- Luminous mirrors
- Illuminated back panels, customizable with prints for use as a visual communication tool



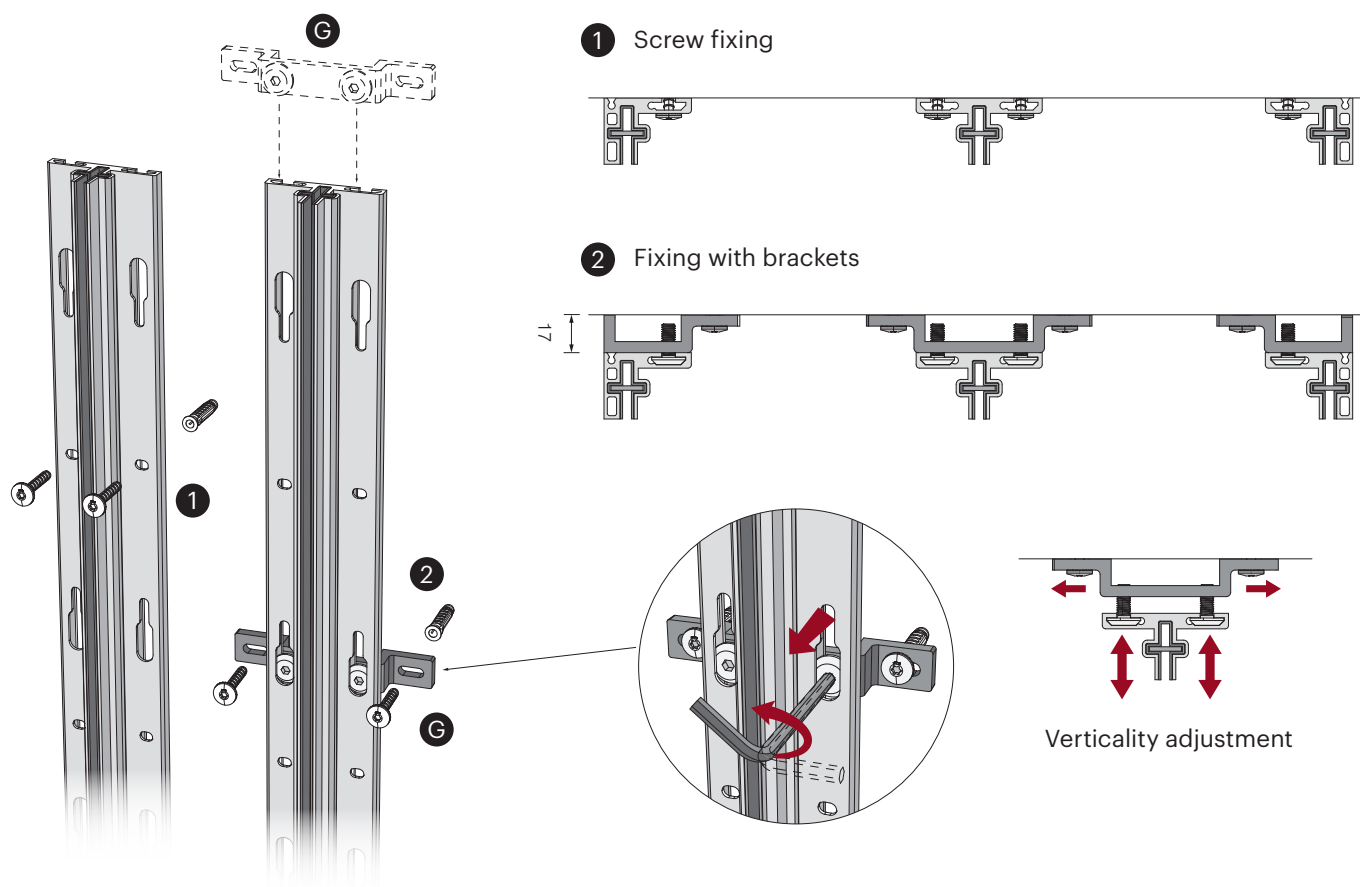
Aluminium uprights with electrified slotted rack

Thin Line system consists of 2 vertical uprights (**A** - Side / **B** - Central) in which is inserted an electrified (12-24V) slotted rack made of high load resistance carbon steel (**C** - for shelf brackets housing): the rack is completely isolated from the aluminum uprights by means of an extruded profile (**D**) and a spacer (**E**- mounted on the base), both made of V0 UL-94 fireproof polycarbonate. Uprights are pre-drilled to be reversible and mounted in any direction and can be directly fixed to the wall with screws (fixing holes **F**) or by means of galvanized carbon steel brackets for precision adjustment on uneven walls (**G**): the side profile can be used on both end of the wall panelling (left/right).

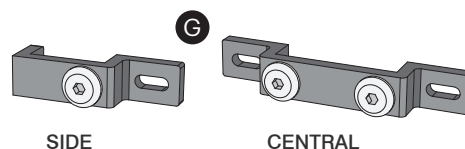
Uprights are capped at the base with a steel plate complete with a setting foot (**H**), by means of which it is possible to adjust the height of the rack inside the upright for perfect shelves alignment. The Thin Line system is compatible with 10 to 23mm thick wooden backs (by the customer), fixed through the keyholes slots (**I** → p.12)



Wall fixing

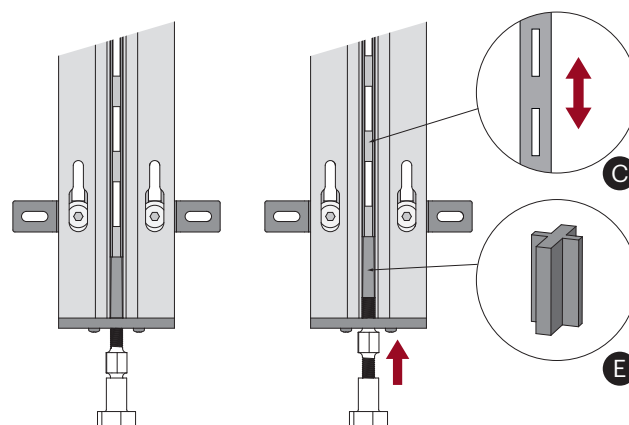


Screws and dowels not included: use screws 5x60mm minimum and dowels suited to the wall material



Double steel screw adjustable setting foot

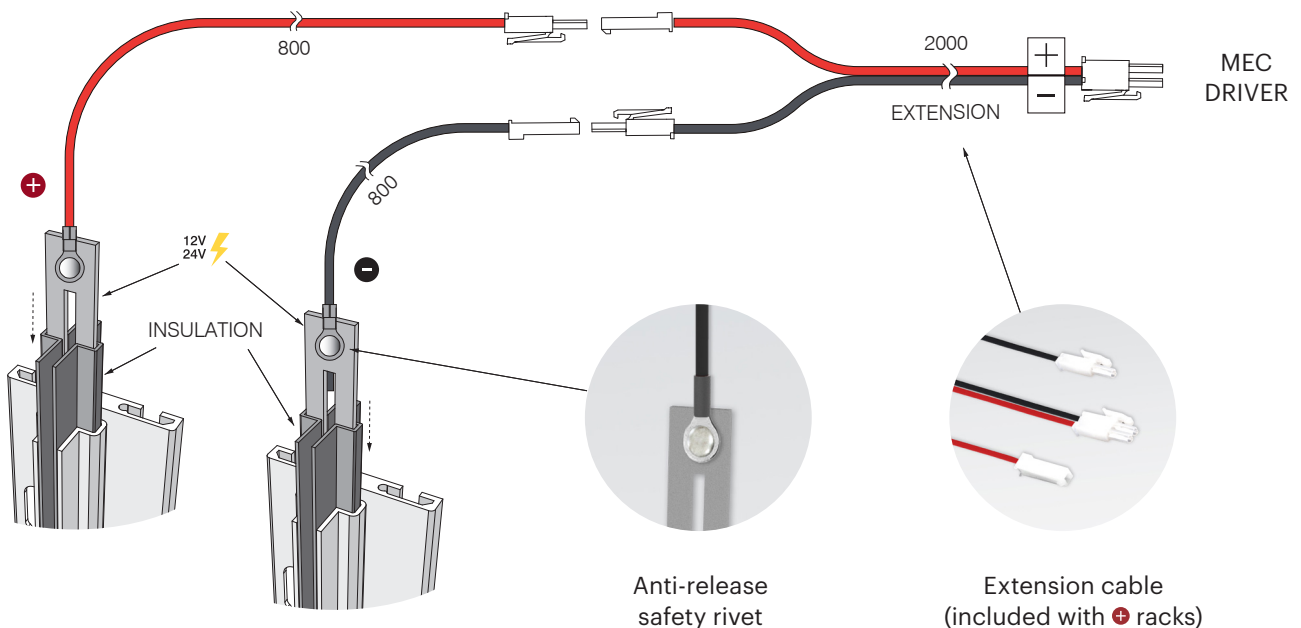
Allows height adjustment of the electrified slotted rack (C) inside the upright for precision shelves alignment: the whole system is electrically isolated by means of a plastic spacer (E) placed between the rack and the adjustable foot.



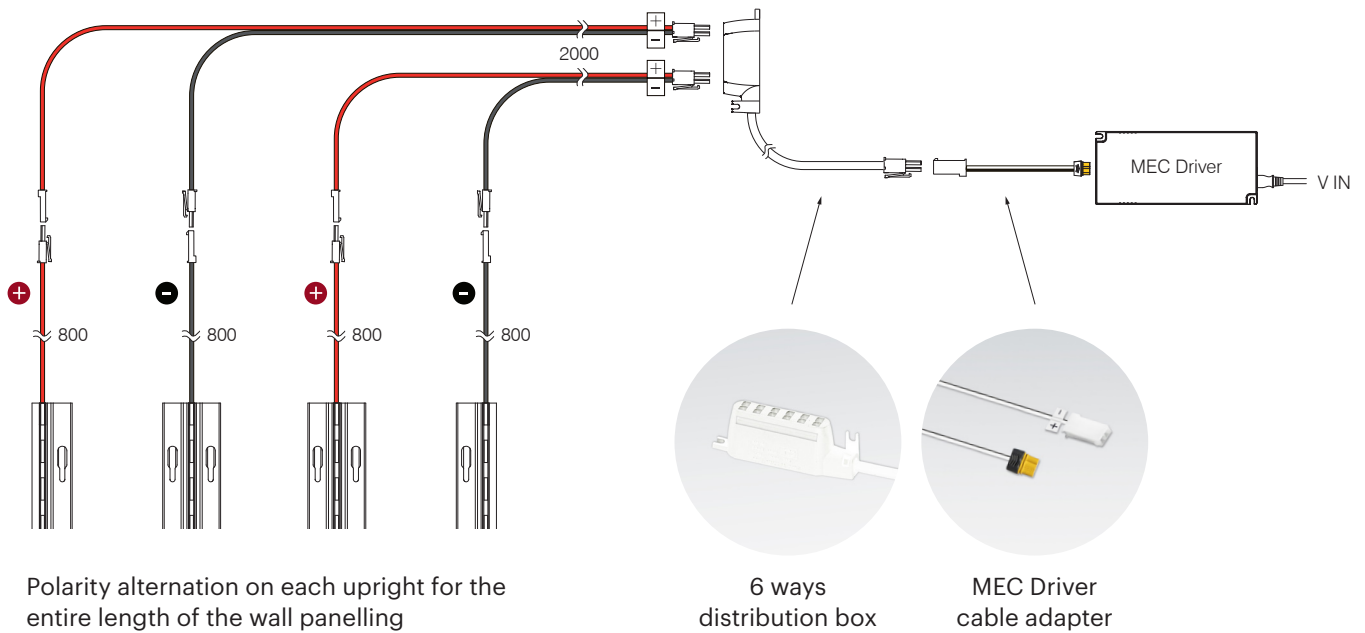
Polarized 12-24V electrified slotted rack

Thin line system features an electrified (12-24V) carbon steel slotted rack to be inserted into the aluminum upright, completely isolated by means of a plastic extrusion (made of V0 UL-94 fireproof polycarbonate). To ensure the best electrical conduction, the steel rack is previously subjected to a special copper and nickel plating surface treatment. Each rack carries a single polarized electrical signal (+ or -) which is transmitted to the LED lamps installed on the shelves through the support brackets (→ p.14).

In order to correctly power the installed luminaires, it is necessary to respect the polarity alternation on each upright for the entire length of the wall panelling. Each rack is supplied with a monopolar cable (red \oplus / \ominus black) secured by means of an anti-release safety rivet and complete with connector. For the mains connection, use a driver with the same voltage (12V or 24V) as the lamps installed on the shelf: the power (W) supplied by the driver must always be greater than the total load applied (number of lamps mounted on the shelf).

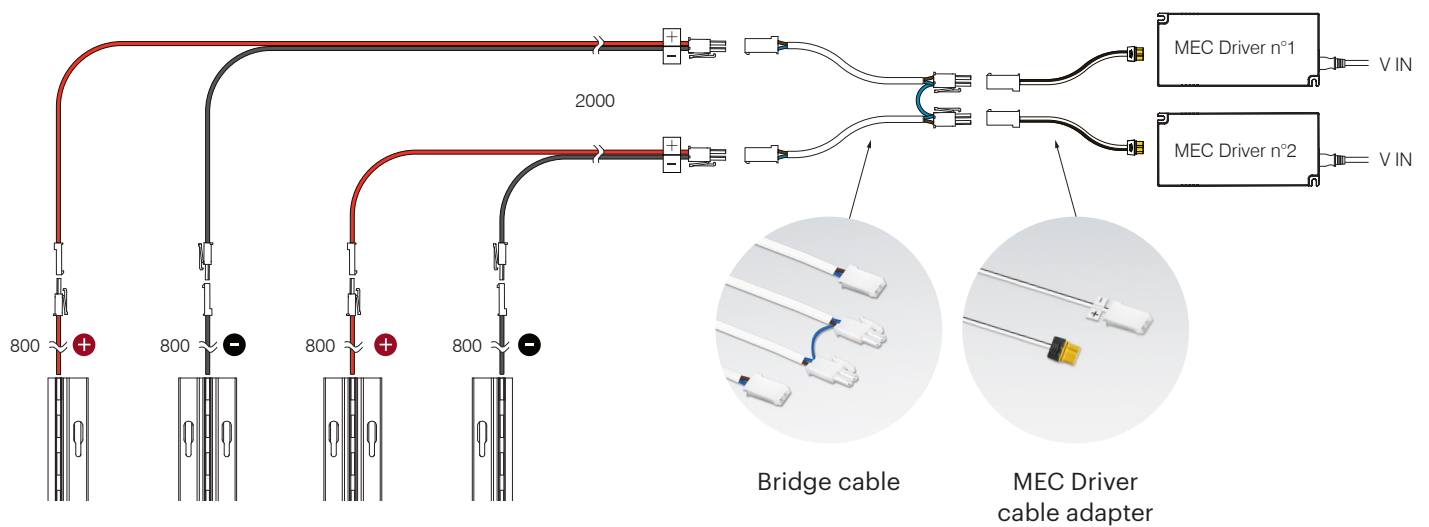


Single LED Driver connection



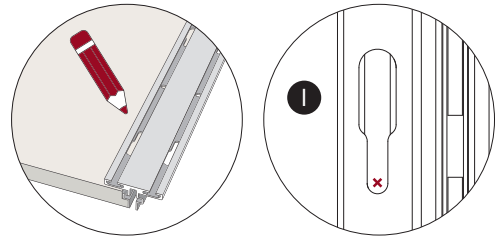
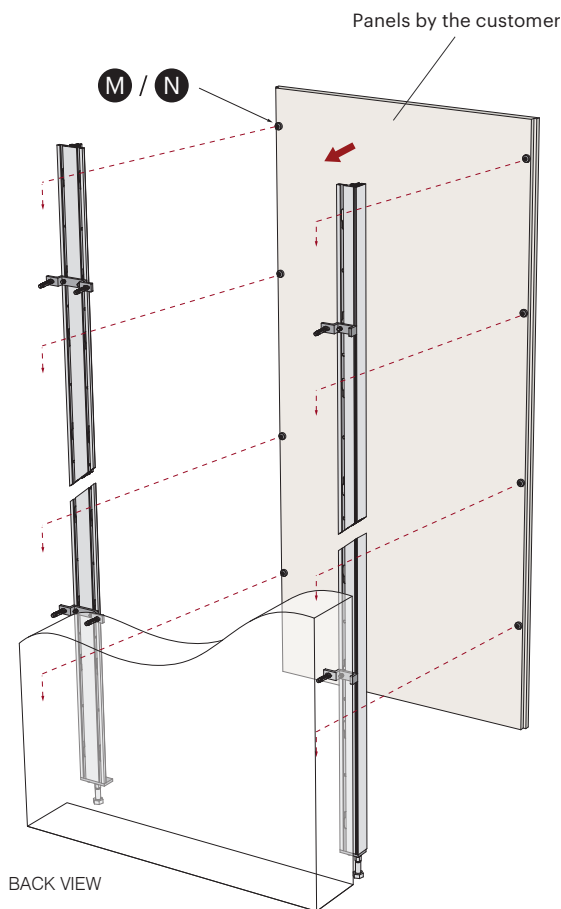
Multiple LED Driver connection

In case multiple LED Drivers are needed on the same Thin Line, Drivers must be connected together by means of a bridge cable.

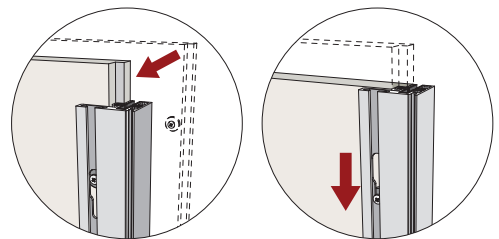


Polarity alternation on each upright for the entire length of the wall panelling

Wooden back panel slide and interlocking assembly



Use one of the uprights as a template to mark the fixing points



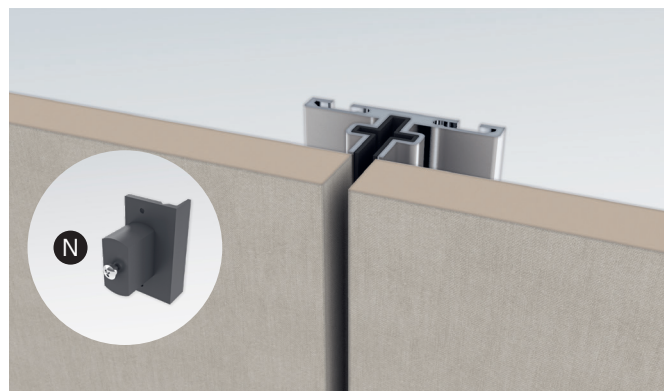
Sliding and anchorage of back panel on upright

Thin Line system uses wooden back panels (by the customer) to be hung on the uprights by means of collar screws through the dedicated holes (I). Zwei Methoden zur Installation der Rückwand



1 Back panel with visible upright

Collar screws are fixed on the back of the panel with spacers (M) of various sizes depending on the thickness of the panel used



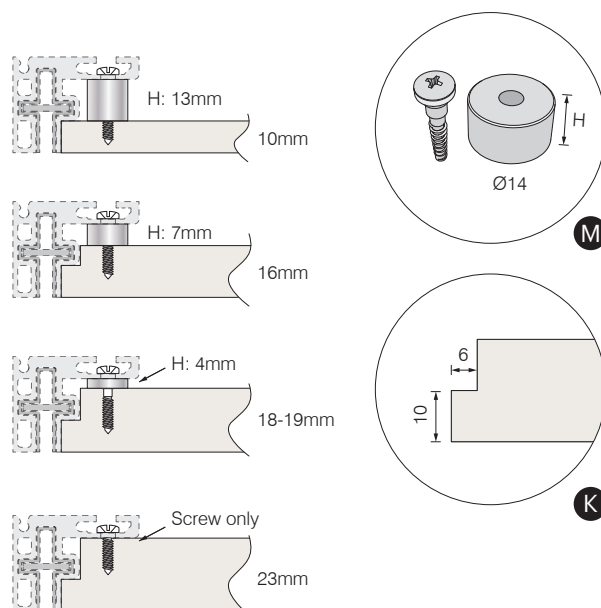
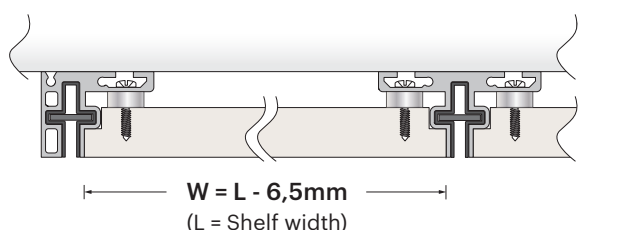
2 Back panel overlapping the upright

Using a plastic spacer (N) complete with pre-installed collar screw, to be fixed on the back of panels of any thickness

Back panels installation methods

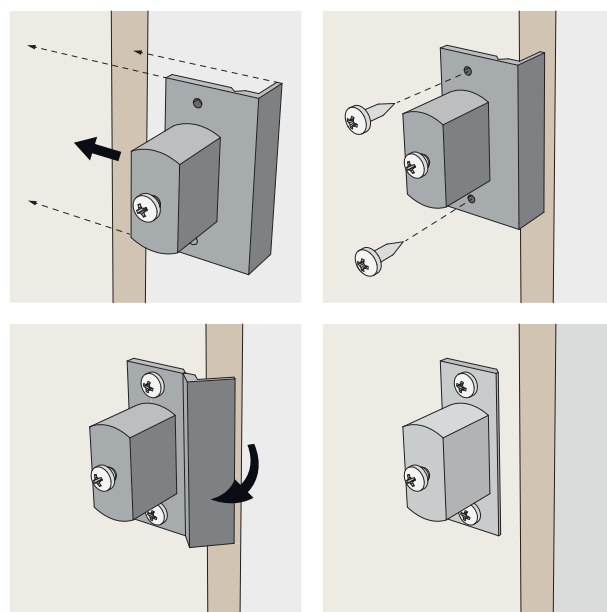
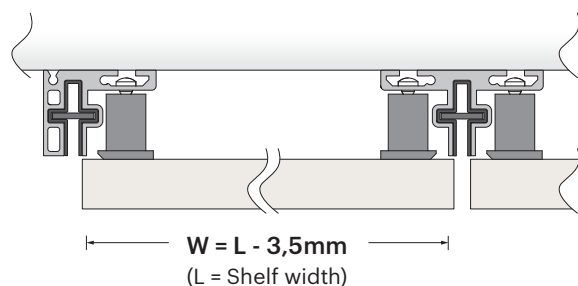
1 Back panel with visible upright

For wooden back panels with a thickness of 10, 16, 19 or 23 mm, to be hung on the panel back with a spacer (M) specific for each panel thickness. Panels thicker than 10mm require a grooving on the side (K) to correctly fit the upright. Panels with 23 mm thickness can be hung without spacer, by means of screws only. Use approximately 4 screws on each side for a 3 meters high panels



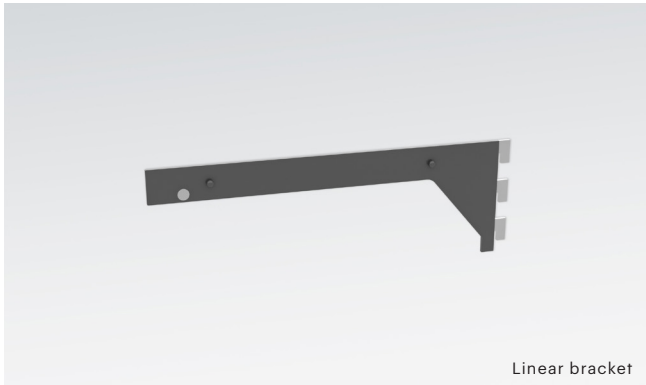
2 Back panel overlapping the upright

The plastic spacer (N) allows for the installation of panels in a forward position, overlapping the aluminum upright, which is completely concealed: an aesthetic and functional solution that reduces the gap between panels, creating an elegant continuous surface effect, with the option to use thick panels without the need for side grooving. Quick and easy to install, the spacer is fixed with screws (not included) on the back of the panel, precisely aligned using the special removable corner template. Use approximately 4 spacers on each side for a 3 meters high panels

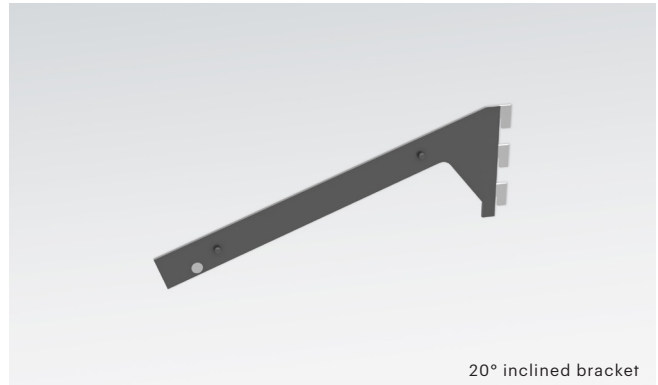


NOTE: Panel width (W) is related to the width (L) of the used shelf, thickness of the shelf support brackets excluded

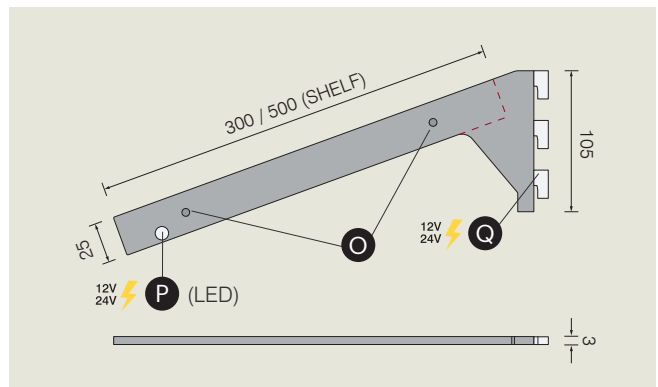
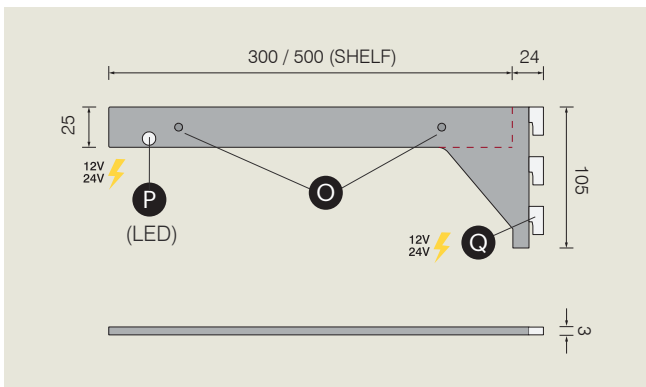
Electrifiable shelves brackets



Linear bracket



20° inclined bracket



Made of 3mm steel; complete with shelf support pins (O) available for 25 thick shelves (others upon request) in linear and 20° inclined design, both in side (right and left) or central for in line shelves versions. To ensure the best electrical conduction, brackets are subjected to a special copper and nickel plating surface treatment, then subsequently covered with insulating epoxy paint layer (black or dark grey): electrification contacts (P/Q) are not painted, allowing the electrical 24V signal (+ / -) to be carried through the bracket, from the electrified rack inside the upright to the lamp installed on the shelf. Each bracket is supplied complete with an anti-release shelf support plug (R/S) to be installed on the shelf (the number and type vary based on the version of the bracket).



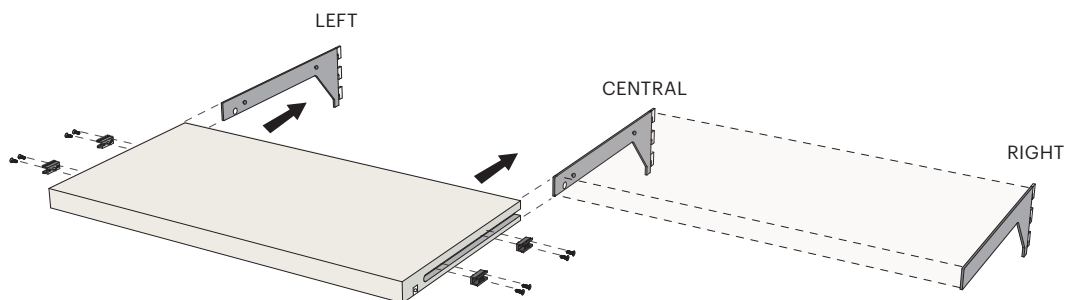
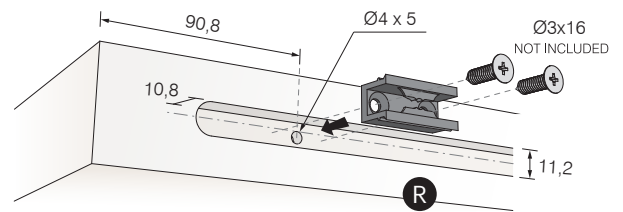
Max load: 15Kg





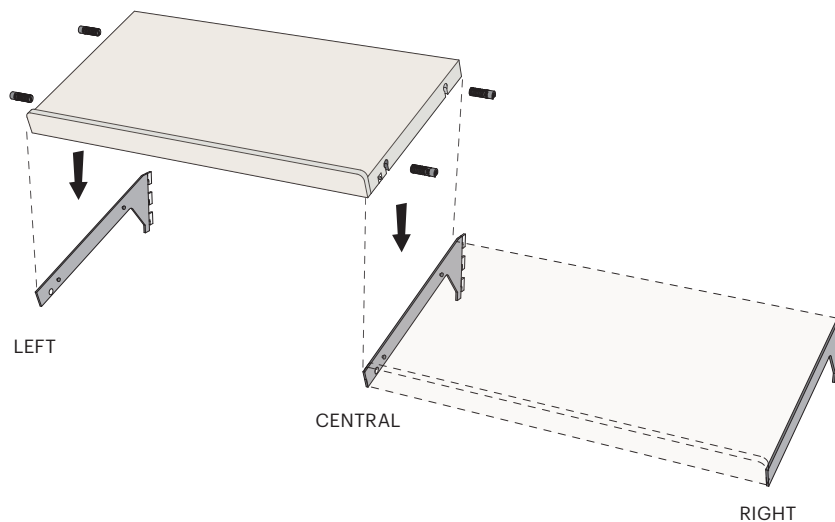
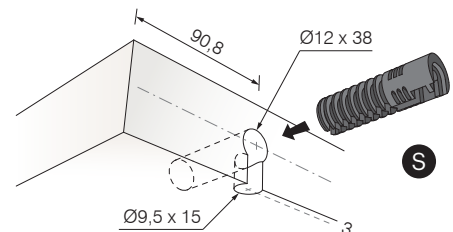
Anti-release linear shelf support plug

Each linear bracket is supplied complete with anti-release plug (R) for frontal insertion of the shelf onto the support pins (O) on the brackets. Plugs must be mounted by means of screws (wooden shelves - side of the shelf requires milling - screws not included) or by pressure (glass shelves with aluminum frame - see p.19). The number of plugs included vary based on the type of bracket used (Left / Central / Right)



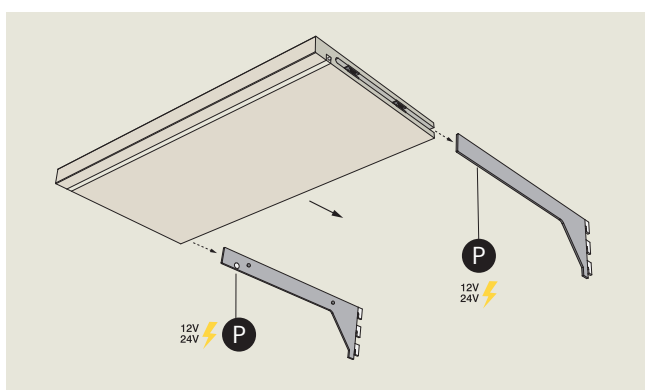
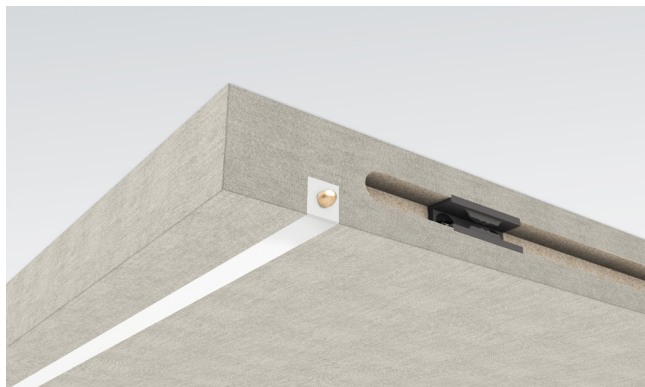
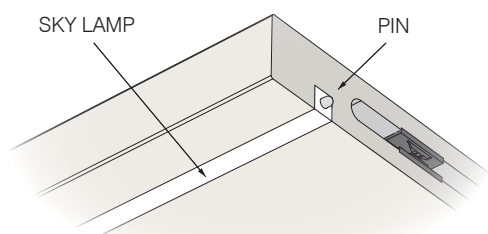
Anti-release inclined shelf support plug

Each inclined bracket is supplied complete with anti-release plug (S) for insertion from above of wooden shelves onto the brackets' support pins (O). The side of the shelves requires specific milling for the plugs to be inserted. The number of plugs included vary based on the type of bracket used (Left / Central / Right)



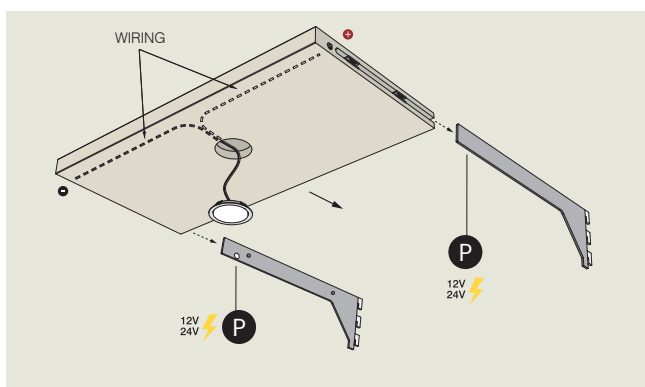
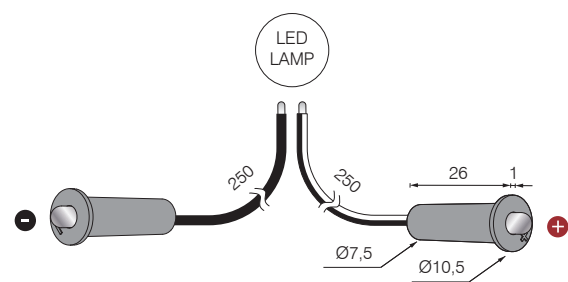
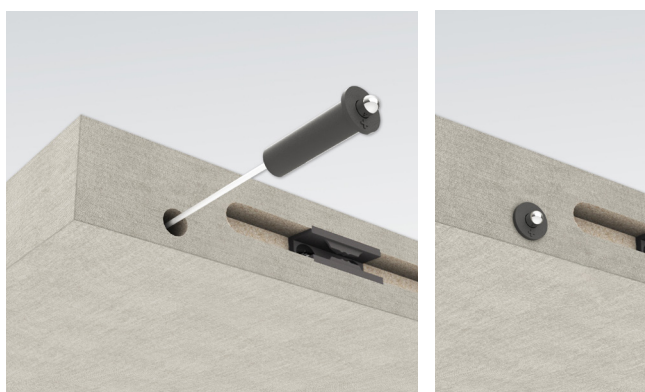
Lamps with integrated contacts

Thin Line System integrates perfectly with SKY PIN, the collection of linear lamps complete with integrated spring loaded contacts: the lamp is installed in the shelf without wiring, aligned with the electrified contact point on the support brackets (P). It is recommended, for ease and flexibility during installation, to opt for the “depolarized” SKY PIN versions, which allows the installation of the lamp in any orientation (no need to respect the electrified support bracket’s polarity). Upon request it is possible to customize the position on the support bracket of the electrified contact point, thus choosing the installation point of the lamp on the shelf.



Lamps with cabled connectors

For other lighting systems it is possible to use a pair of connectors cabled to the lamp: connectors must be installed on the sides of the shelf, aligned with the electrified contact points (P) on the support brackets. To optimize the wiring inside the shelf, both the positioning of the electrified contact point and the length of the lamp cable can be customized upon request.

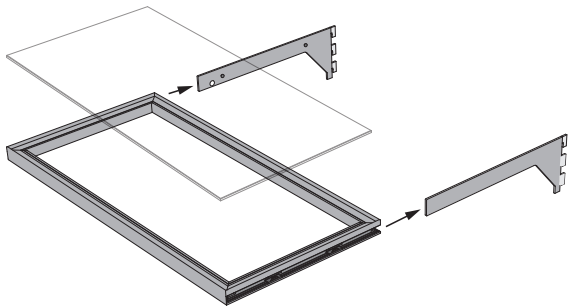






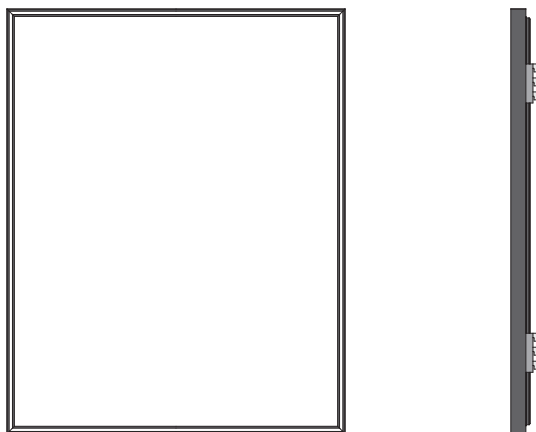
Glass shelf with aluminum frame

Anodized aluminium frame in black or titanium bronze finish, complete with integrated lighting with electrification contacts; 4mm transparent glass; compatible with linear shelves support brackets. Custom measures upon request.



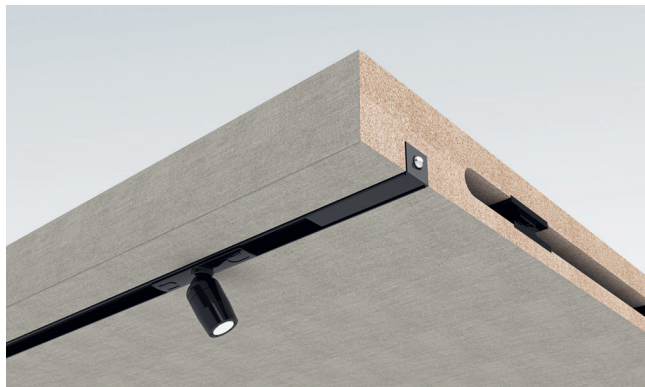
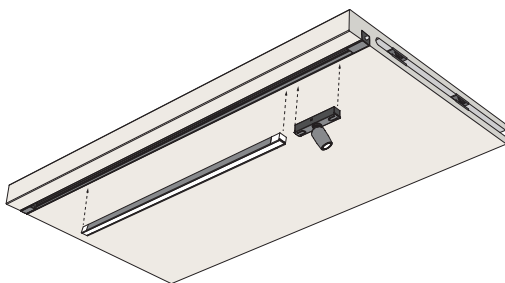
VIP luminous mirror

Anodized aluminium frame in black or titanium bronze finish; front light on 4 sides, with or without backlighting, and proximity switch mounted on the side; custom measures upon request.



Electrified track for adjustable spotlights with magnetic mounting

Directional lighting, positioned only where necessary: the Lite Track electrified rail, complete with integrated spring electrification contacts, is the ideal solution to conceal the light source and focus attention on the illuminated object. Elegant black finish, recessed installation in 11mm width only mill, Lite track is installed in the shelf without wiring, aligned with the electrified contact point on the support brackets (**P** → p.14) and can easily power miniaturized adjustable spotlights and linear lamps through magnetic mounting.



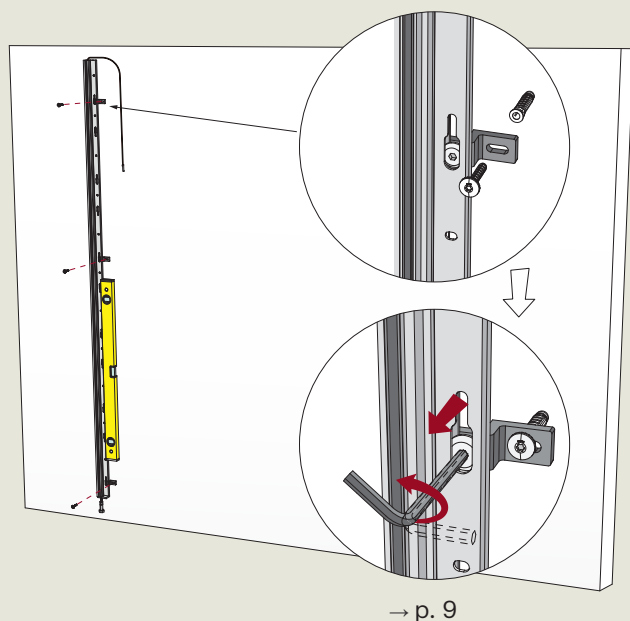
Solaris light panel

Bespoke measure only; frameless; replaces or integrates the wooden back panel; customizable with prints for use as a visual communication tool.

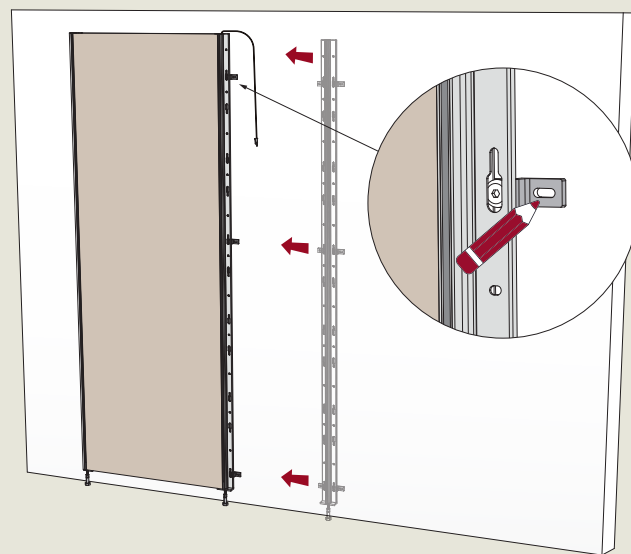




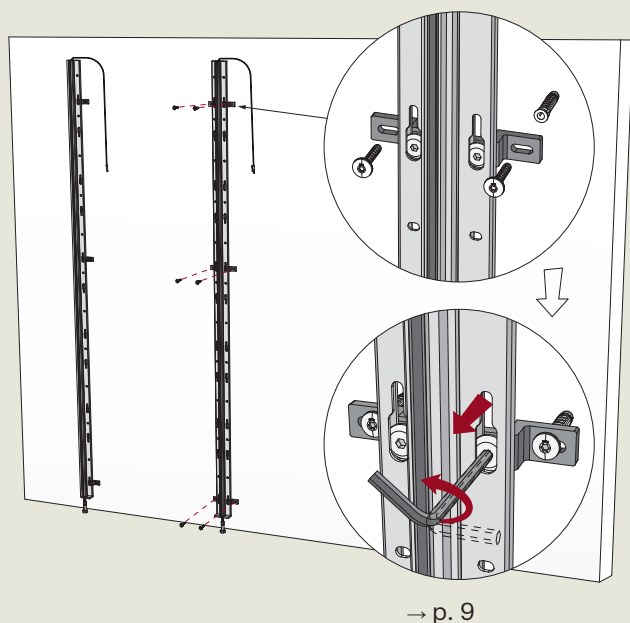
Wall paneling installation



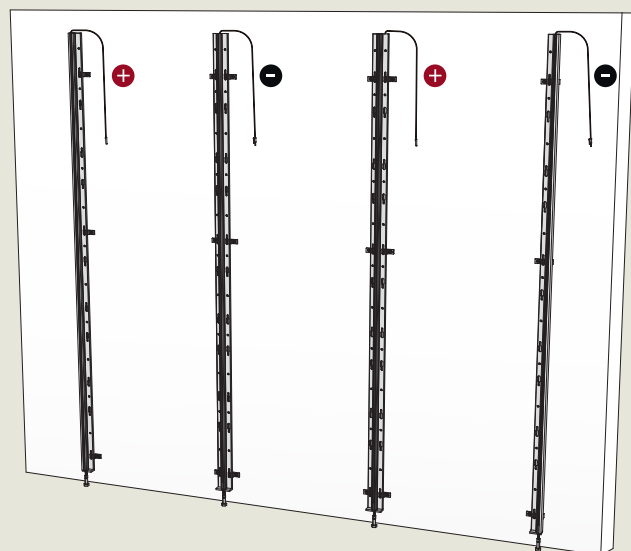
1 - Fix the first upright (side) to the wall, checking that it is levelled and adjusting its verticality using the wall fixing brackets



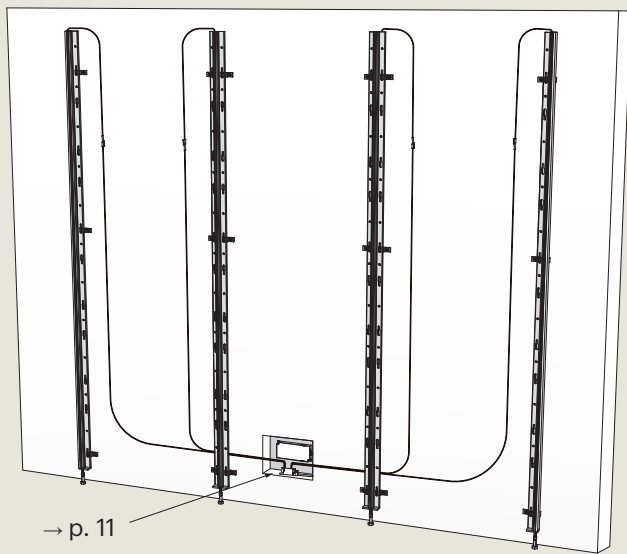
2 - Place the next upright (central): use a back panel as a template to locate the correct position of the upright and mark the fixing points



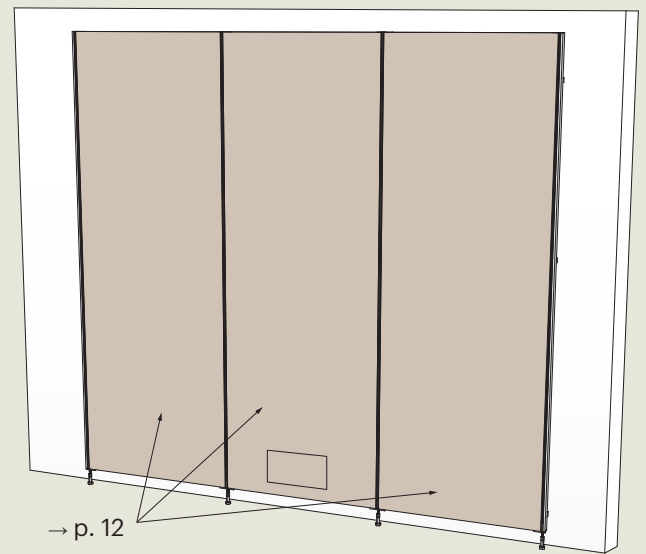
3 - Remove the back panel and fix the upright to the wall, adjusting its verticality using the wall fixing brackets



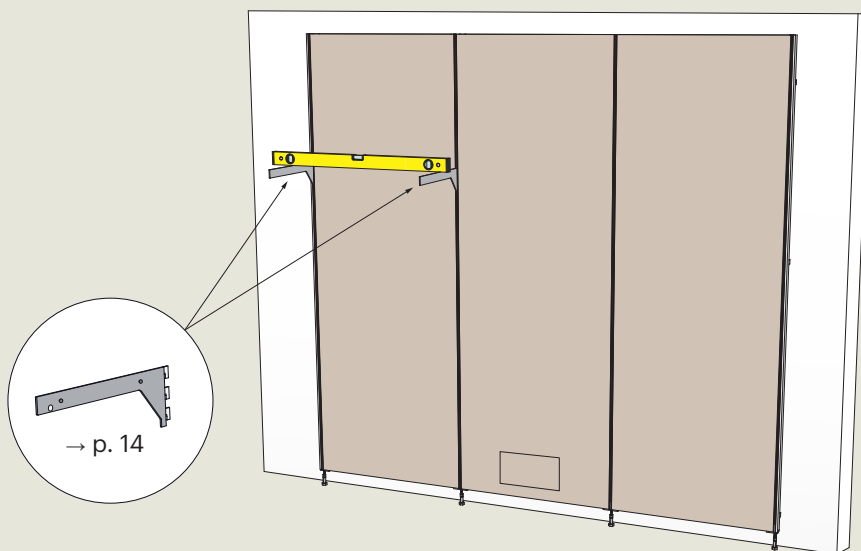
4 - Repeat steps 2 and 3 to complete wall mounting of all uprights, respect the polarity alternation on each upright for the entire length of the wall panelling



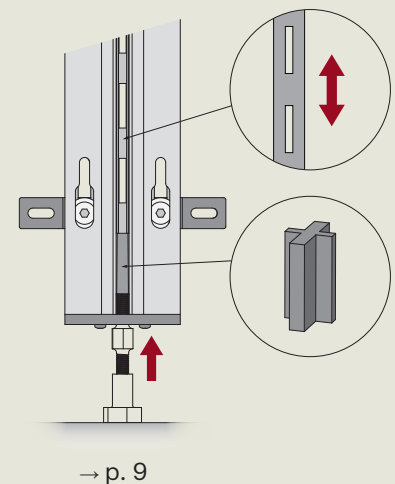
5 - Connect the polarized cables to the LED Driver (to be fixed to the wall or inside junction box / inspectionable compartment)



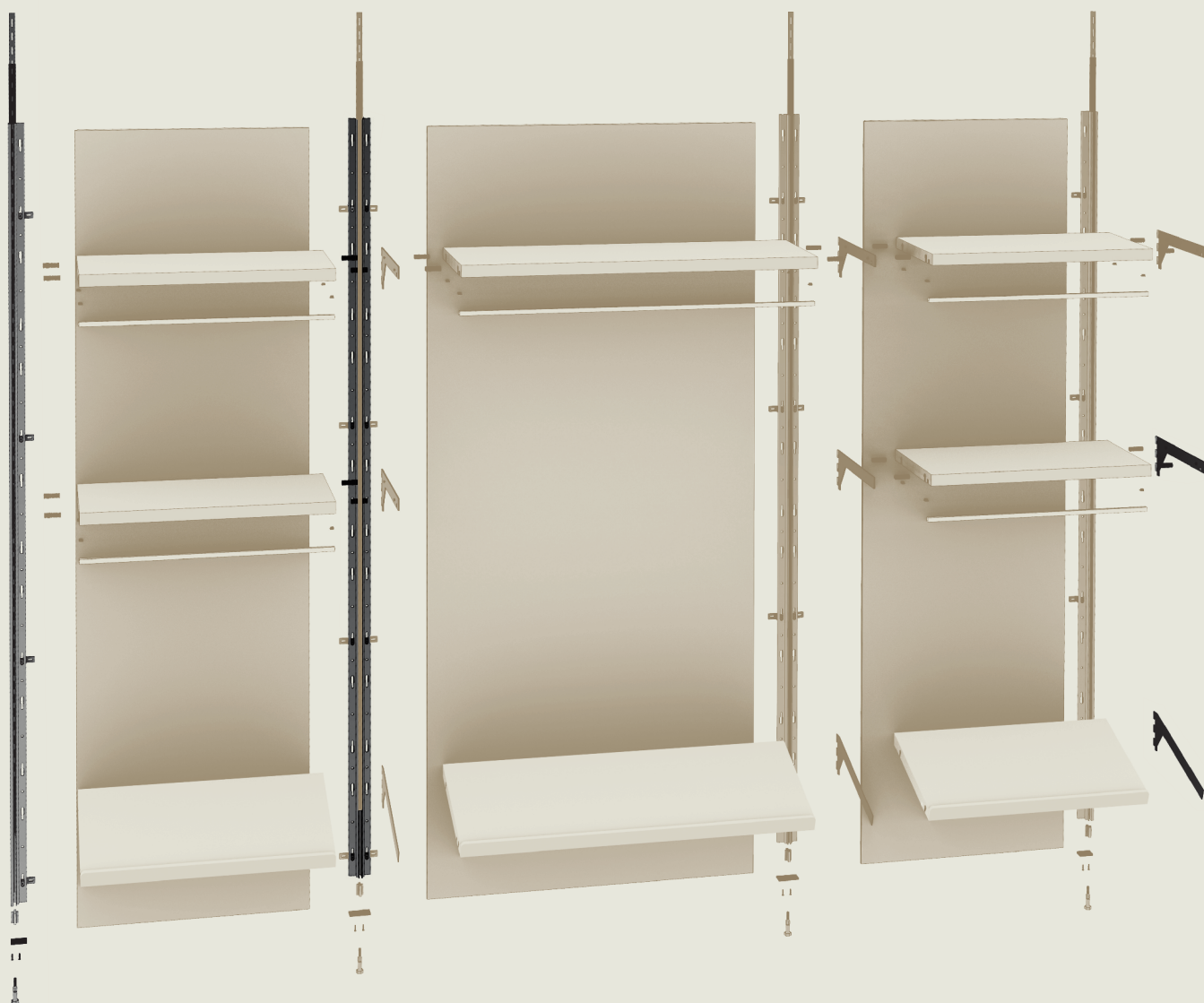
6 - Install the back panels on the uprights (sliding and anchorage): it is suggested to prepare an inspection hatch to access the LED Driver.



7 - Adjust the height of the slotted rack inside the uprights by means of the setting foot' screw: use two shelf brackets to check that the racks are leveled correctly (repeat the operation for the entire length of the wall panelling)



Configuration system



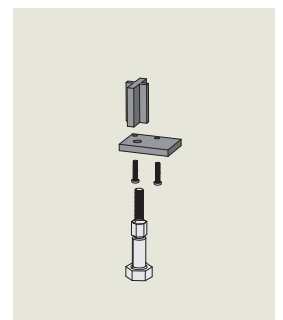
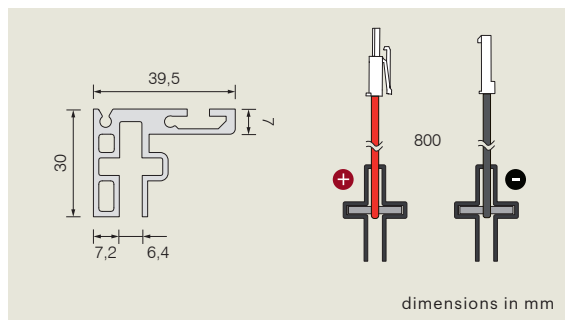
A - Complete side upright

Anodized aluminium side upright; cabled slotted rack (+ / -) complete with insulation profile; setting foot (not assembled). Extension cable (F→ p.29) included with + rack. Screws and dowels for wall installation not included; other measures and finishes upon request.



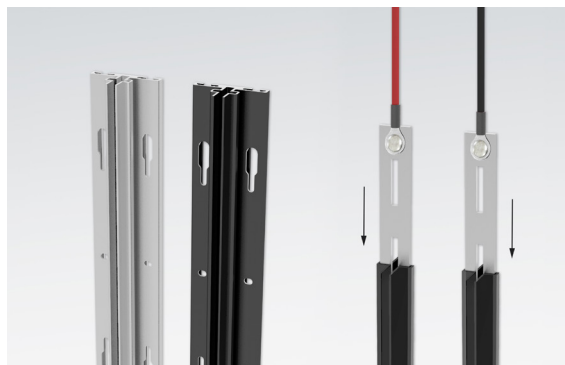
3000 mm

Black	+	910000065
	-	910000066
Aluminium	+	910000067
	-	910000068



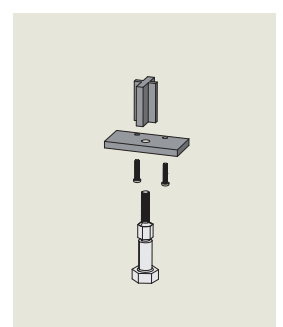
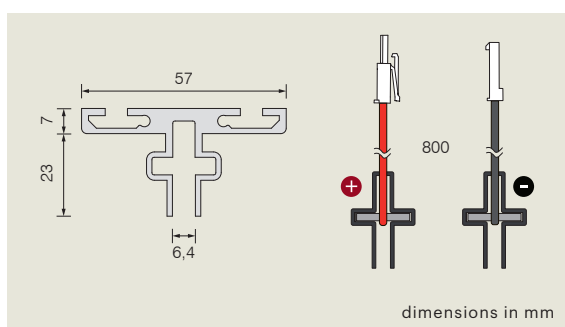
B - Complete central upright

Anodized aluminium central upright; cabled slotted rack (+ / -) complete with insulation profile; setting foot (not assembled). Extension cable (F→ p.29) included with + rack. Screws and dowels for wall installation not included; other measures and finishes upon request



3000 mm

Black	+	910000061
	-	910000062
Aluminium	+	910000063
	-	910000064

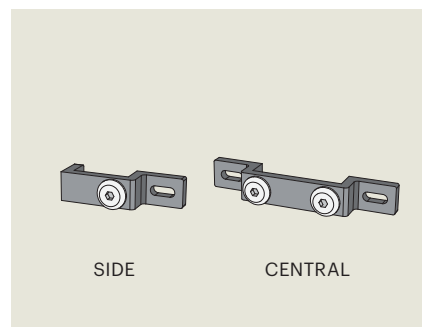
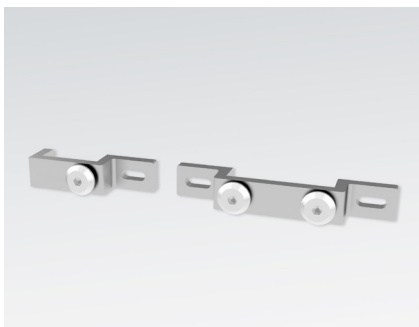


C - Wall fixing brackets

Min. 3 brackets for 3m upright. Screws and dowels not included.

3 pcs

Side	600800031
Central	600800032

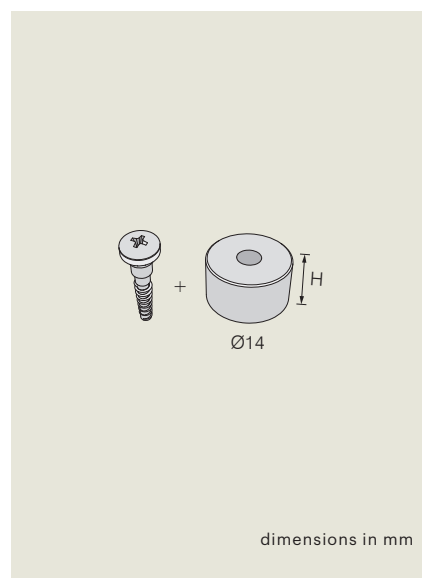
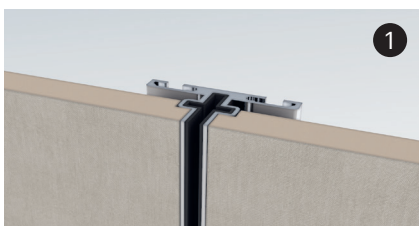


D - Back panel fixing screw

Collar screws complete with spacer in different heights depending on the thickness of the panel used: for back panel installation with visible uprights (1). Use approximately 4 screws on each side for a 3 meters high panels

10 pcs

H 4 mm - 18-19mm panel	600800033
H 7 mm - 16mm panel	600800034
H 13 mm - 10mm panel	600800035

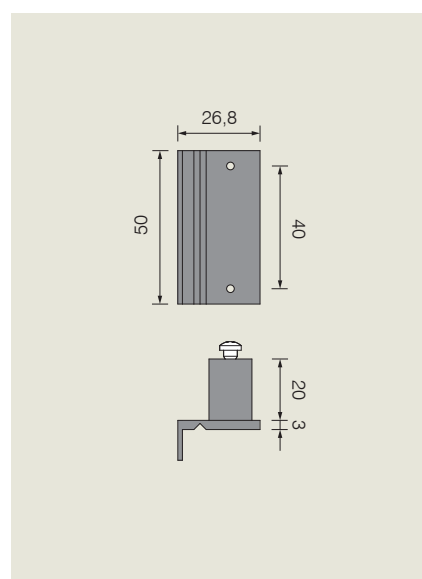
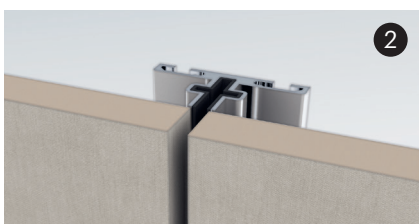
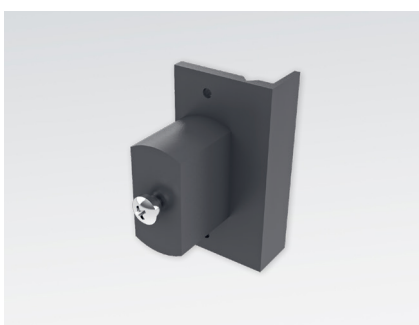


E - Back panel plastic spacer

Complete with pre-installed collar screw and removable installation corner template: the spacer allows the installation of the backrests in a forward position, overlapping (2) the aluminium upright. Use approximately 4 spacers on each side for a 3 meters high panels. Fixing screws not included.

10 pcs

on request

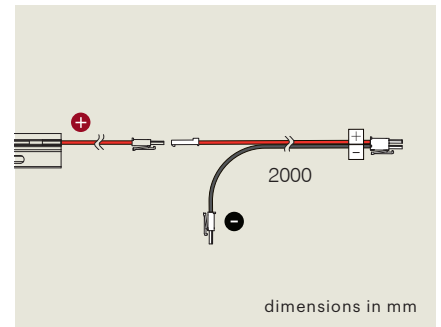
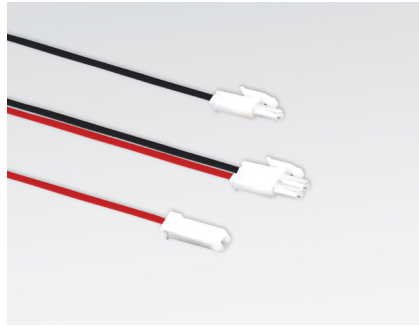


F - Extension cable

Connection of two consecutive complete uprights (+ / -); included with + racks (A/B → p.27). Diagram → p.10

2000 mm

1 pcs

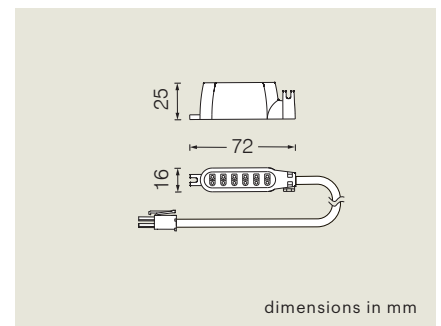


G - 6 Ways distribution box

For complete uprights connection to Driver. Diagram → p.11

1 pcs

940600532

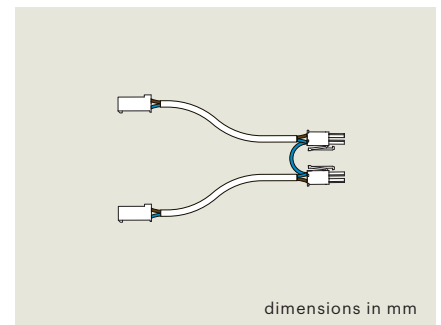


H - Bridge cable

For complete uprights connection to multiple Drivers. Diagram → p.11

1 pcs

910300010

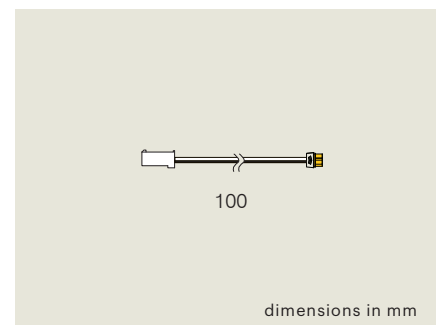


I - MEC Driver cable

MEC Driver system cable adapter. Diagram → p.11

1 pcs

940600533



J - Electrifiable shelves brackets (linear)

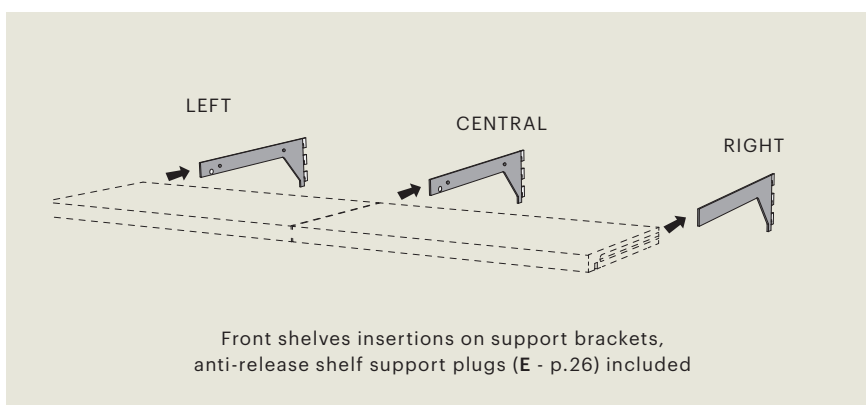
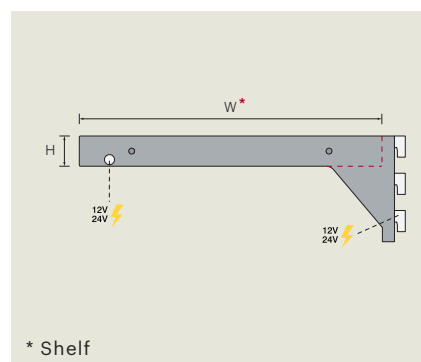
Made of painted steel (black or dark grey); other measures and finishes upon request; non electrifiable version on request. Inkl: shelf support plugs (K)

W 300 x H 25mm (shelf dimension)

Nero	Left	942100004
	Central	942100006
	Right	942100002
Grigio	Left	942100003
	Central	942100005
	Right	942100001

W 500 x H 25mm (shelf dimension)

Nero	Left	942100010
	Central	942100012
	Right	942100008
Grigio	Left	942100009
	Central	942100011
	Right	942100007



Note for wooden shelves

The shelf depth indicated in the table (W: 300 or 500mm) refers to the installation of the paneling with visible uprights (1). In case of installation with back panels overlapping the upright (2) it is necessary to subtract the thickness (T) of the back panel used from the depth of the shelf (W).



Shelf depth = W

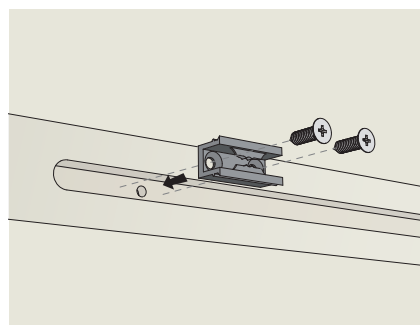


Shelf depth = (W - T)

K - Anti-release shelf support plug

Included with linear shelves support brackets (J - plug number depends on bracket's type). Screws not included

Left support bracket	2 pcs
Central support bracket	4 pcs
Right support bracket	2 pcs



L - Electrifiable shelves brackets (inclined)

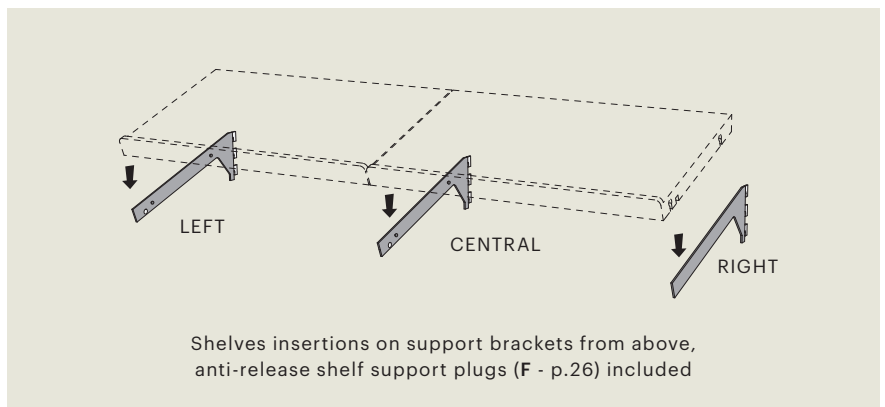
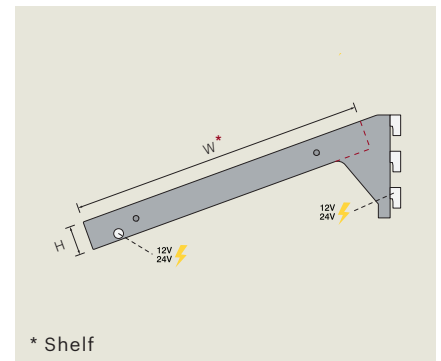
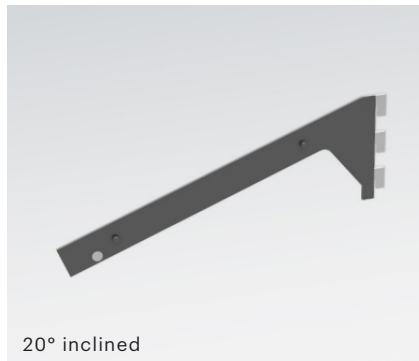
Made of painted steel (black or dark grey); other measures and finishes upon request; non electrifiable version on request. Inkl: shelf support plugs (M)

W 300 x H 25mm (shelf dimension)

Nero	Left	942100016
	Central	942100018
	Right	942100014
Grigio	Left	942100015
	Central	942100017
	Right	942100013

W 500 x H 25mm (shelf dimension)

Nero	Left	942100022
	Central	942100024
	Right	942100020
Grigio	Left	942100021
	Central	942100023
	Right	942100019



Note for wooden shelves

The shelf depth indicated in the table (W: 300 or 500mm) refers to the installation of the paneling with visible uprights (1). In case of installation with back panels overlapping the upright (2) it is necessary to subtract the thickness (T) of the back panel used from the depth of the shelf (W).



Shelf depth = W

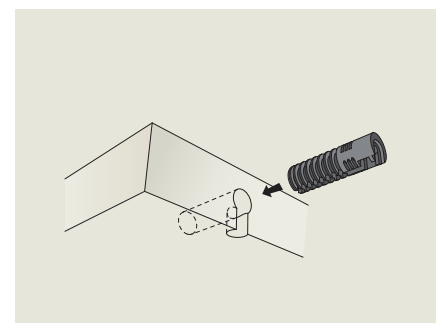


Shelf depth = (W - T)

M - Anti-release shelf support plug

Included with inclined shelves support brackets (L - plug number depends on bracket's type).

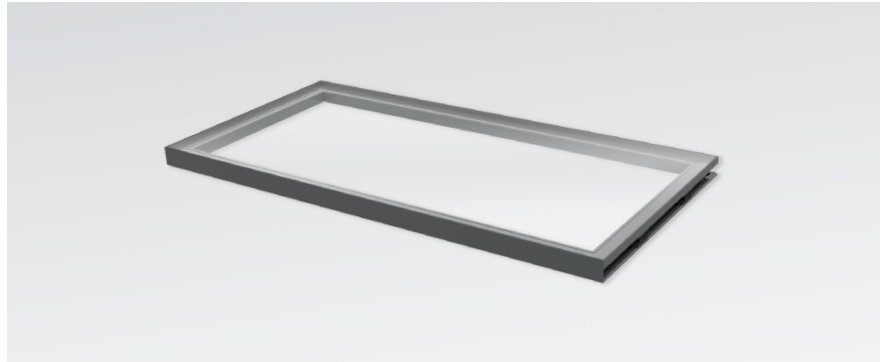
Left inclined support bracket	2 pcs
Central inclined support bracket	4 pcs
Right inclined support bracket	2 pcs





N - Glass shelf with aluminum frame

Anodized aluminium frame in black or titanium bronze finish, complete with integrated lighting with electrification contacts; 4mm transparent glass; compatible with linear shelves support brackets. Custom measures upon request.



600 x 300 mm 4,16W

Black	2700K	595800004
	4000K	595800003
Titanium Bronze	2700K	595800002
	4000K	595800001

900 x 300 mm 6,56W

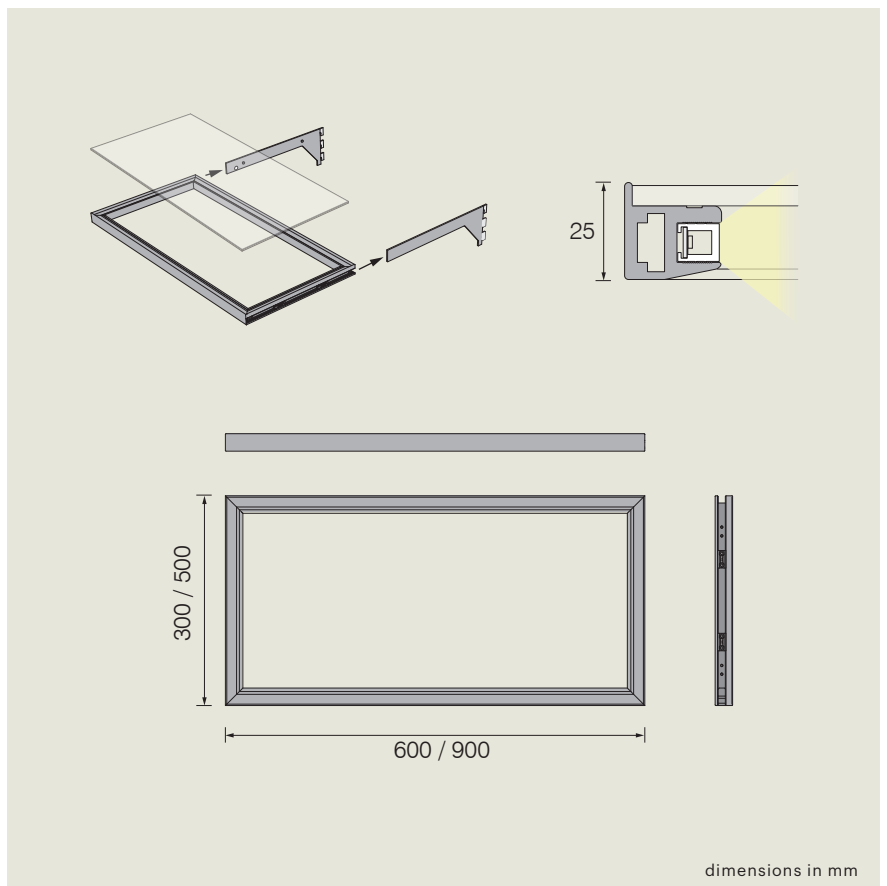
Black	2700K	595800008
	4000K	595800007
Titanium Bronze	2700K	595800006
	4000K	595800005

600 x 500 mm 4,16W

Black	2700K	595800012
	4000K	595800011
Titanium Bronze	2700K	595800010
	4000K	595800009

900 x 500 mm 6,56W

Black	2700K	595800016
	4000K	595800015
Titanium Bronze	2700K	595800014
	4000K	595800013



Note for shelves depth

The shelf depth indicated in the table (300 or 500mm) refers to the installation of the paneling with visible uprights (1). In case of installation with back panels overlapping the upright (2) it is **necessary to indicate during order the thickness (T) of the back panel used**, for custom aluminium frames manufacturing.



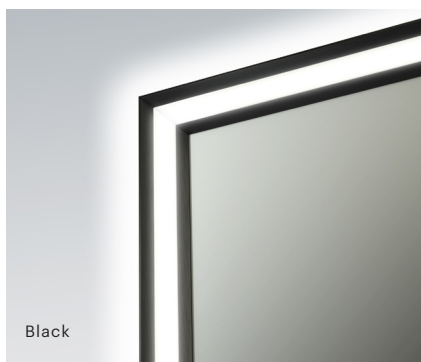
Standard codes



Custom

O - VIP luminous mirror

Anodized aluminium frame in black or titanium bronze finish; front light on 4 sides, with or without backlighting, and proximity switch mounted on the side (double switch in backlit models); custom measures upon request.



900 x 600 44W

Black	2700K	547200010
	4000K	547200002
Titanium Bronze	2700K	547200009
	4000K	547200001

900 x 600 with backlighting 60W

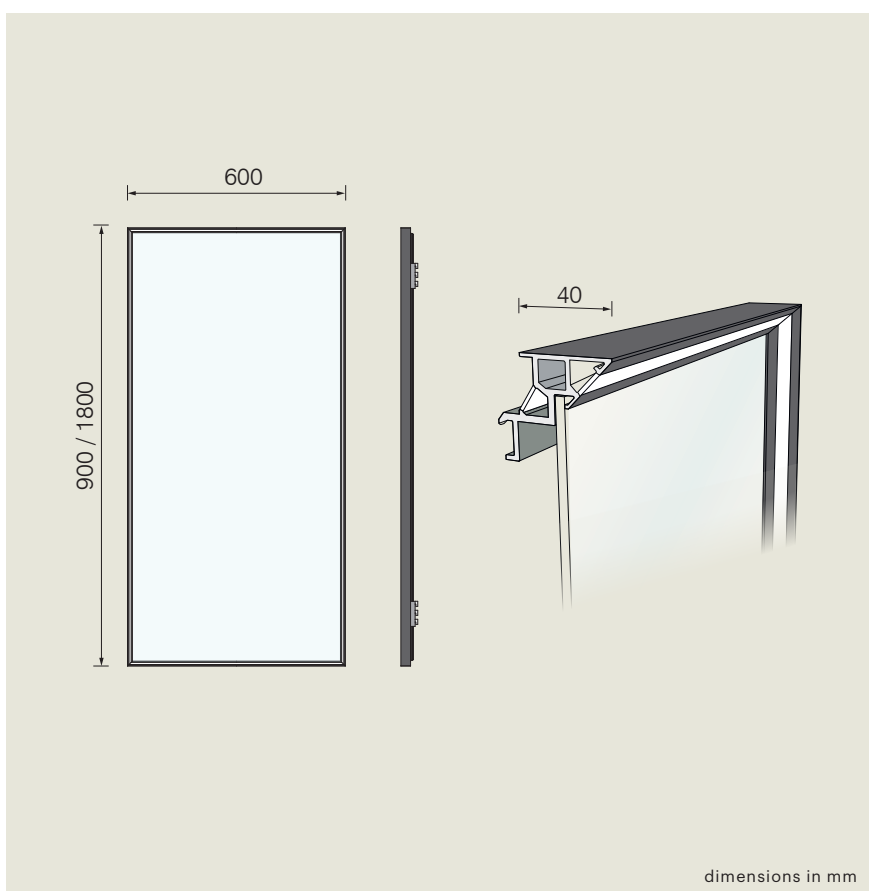
Black	2700K	547200014
	4000K	547200006
Titanium Bronze	2700K	547200013
	4000K	547200005

1800 x 600 66W

Black	2700K	547200012
	4000K	547200004
Titanium Bronze	2700K	547200011
	4000K	547200003

1800 x 600 with backlighting 98W

Black	2700K	547200016
	4000K	547200008
Titanium Bronze	2700K	547200015
	4000K	547200007



Codes note

The codes indicated in the table refer to the installation of the paneling with visible uprights (1). In the case of installation with back panels overlapping the upright (2), it is necessary to indicate during order the thickness (T) of the back panel used, for customized electrified brackets manufacturing.



Standard codes

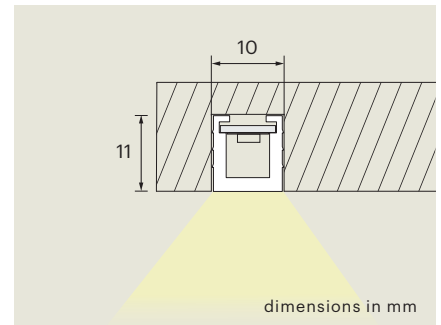


Custom

P - SKY PIN

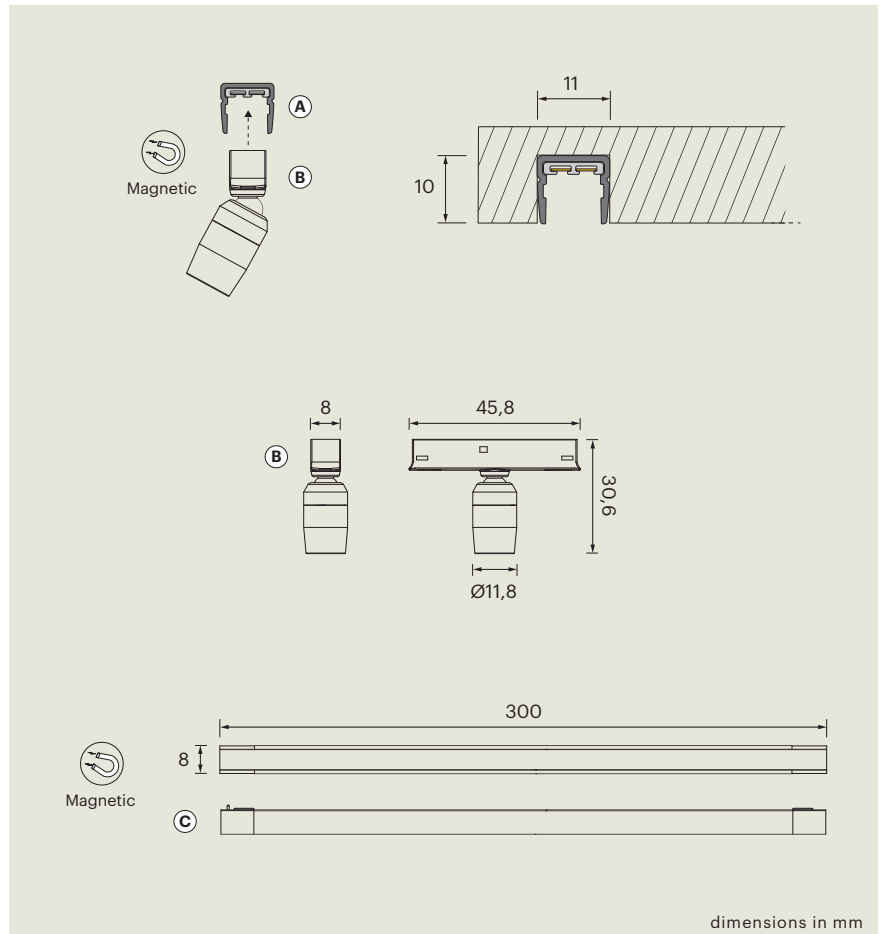
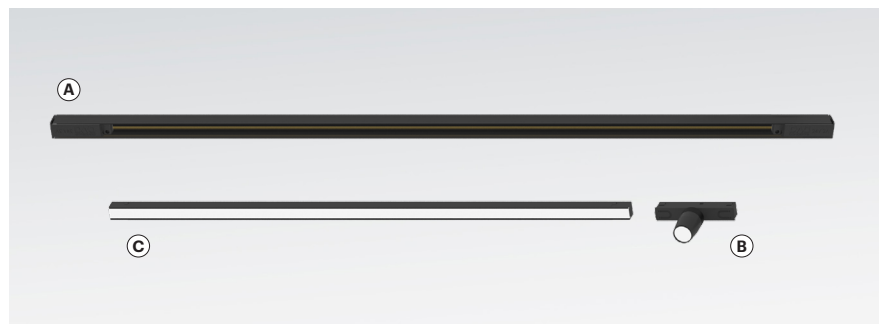
Linear recessed lamp with opal screen cover and depolarized spring loaded contacts. Description → p.18

600mm	4,16W	2700K	520100002
		4000K	520100001
900mm	6,56W	2700K	520100004
		4000K	520100003



Q - Lite Track

Recessed electrified track with spring loaded contacts: can be used with swiveling micro spotlights or linear lamps (300mm) both featuring magnetic fixing. Description → p.22



(A) Electrified track

Nero	3000K	custom
------	-------	---------------

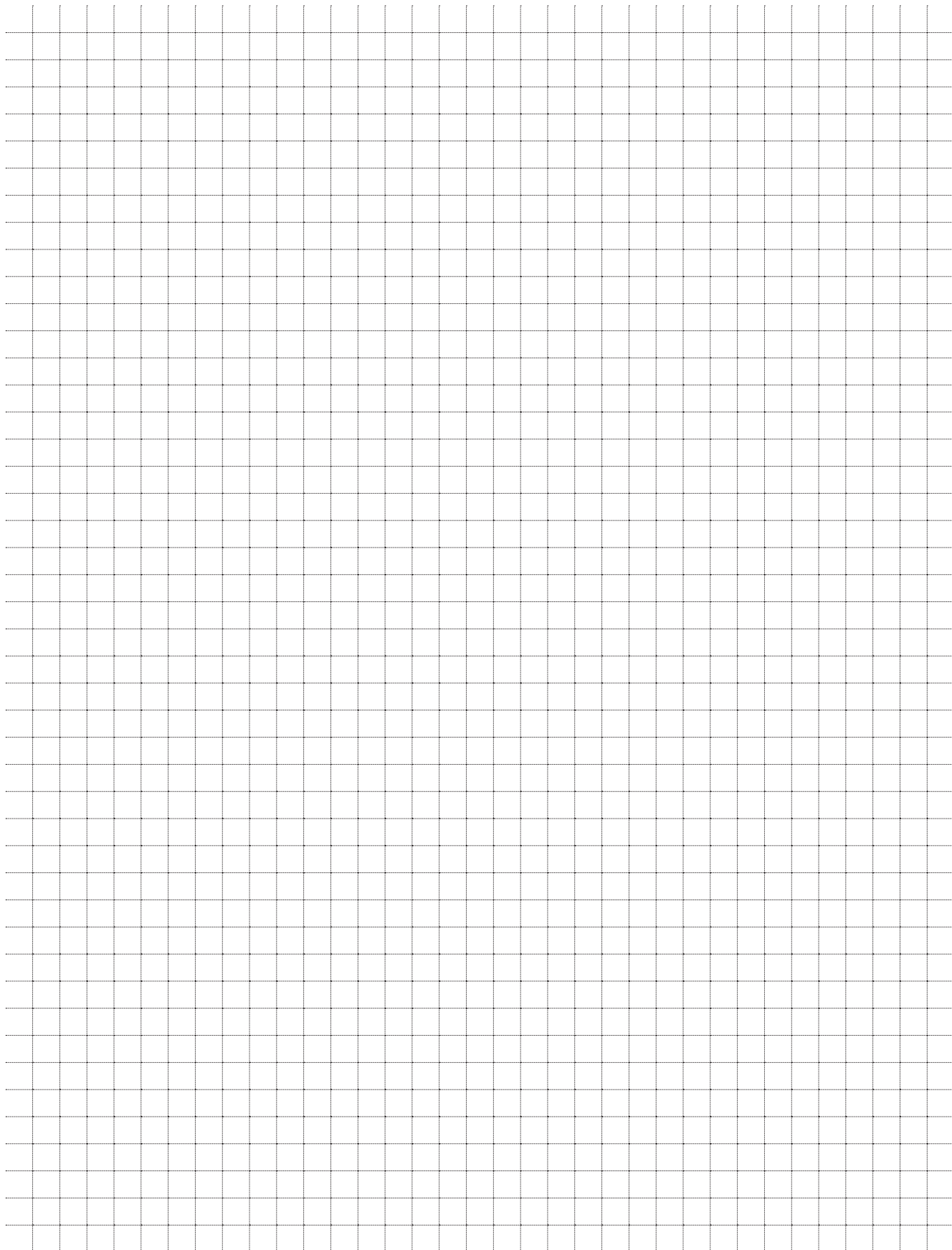
(B) Magnetic swivling spotlight **1W**

Nero	3000K	on request
------	-------	-------------------

(C) Magnetic linear lamp **3,5W**

300mm	3000K	on request
-------	-------	-------------------

[illegible]



The information present in this catalog may be subject to errors. The articles, their characteristics, data and dimensions found therein are not binding and may be subject to change without prior notice from the company.

HEADQUARTERS

OUR SUBSIDIARIES

ITALY

Brugnera
Via L. Zanussi, 8
Maron di Brugnera (PN)
+39 0434 616611
info@ls-light.com

Varese
Via Pacinotti, 54
Varese (VA)
+39 0332 491247
info@formaefunzione.com

Tavullia
Via del Lavoro, 4
Tavullia (PU)
+39 0721 901123
info@italpek.it

Recanati
Via Armando Cingolani, 13
Zona Ind.le P.I.P.
Sambucheto di Recanati
Recanati (MC)
+39 071 0960086
sales@fluxitalia.com

GERMANY

L&S Deutschland GmbH
Daimlerring, 34
Rödinghausen
+49 5223 8790-0
info@ls-light.de

CHINA

LS Lighting Equipment
(Shanghai) Co., Ltd.
No. 255, LongPan Rd.,
Malu Town,
Jiading District, Shanghai
+86 021 69 15 67 91
info.china@ls-light.com

UNITED STATES

L&S Lighting Corporation
1505 Pavilion Place, Suite A
Norcross, Georgia
+1 877 877 0757
info.us@ls-light.com

